



# CREATURE COMPARISON CHART

HELPFUL

HARMFUL

# Creatures that may be found in and near strawberry farms

**Directions:** Cut out these images and paste them into the correct column: Helpful or Harmful (be sure to explain why you choose your placement).

**Squirrel**



**Deer**



**Ladybug**



**Birds**



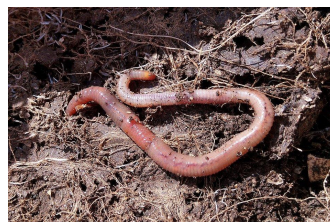
**Aphids**



**Two-spotted spider mite**



**Earthworm**



**Butterfly**





# CREATURE COMPARISON CHART

## HELPFUL



### Answer Key:

By now students should begin to see that almost all animals and insects can be harmful to strawberry plants at any stage of development. There are only a few creatures categorized as helpful. One example most strawberry farmers could give you is the only way to get rid of the two-spotted spider mite is to be eaten by other mites to control them from ruining a crop.

## HARMFUL

