

# Creatures that may be found in and near strawberry farms

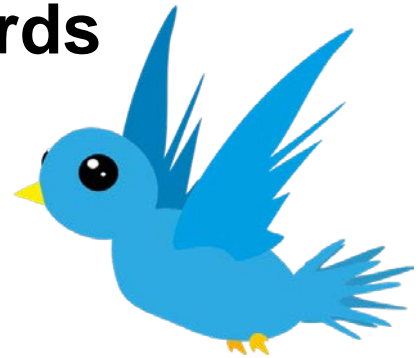
**Squirrel**



**Earthworm**



**Birds**



**Deer**



**Two-spotted spider mite**



**Ladybug**



**Butterfly**



**Aphids**



**Leafroller**



# Creature Comparison Chart



**Helpful**

**Harmful**

<b>Helpful</b>	<b>Harmful</b>

# Creature Comparison Chart



## Helpful



**Answer Key:**  
By now students should begin to see that almost all animals and insects can be harmful to strawberry plants at any stage of development. There are only a few creatures categorized as helpful. One example most strawberry farmers could give you is the only way to get rid of the two-spotted spider mite is to be eaten by other mites to control them from ruining a crop.

## Harmful

